



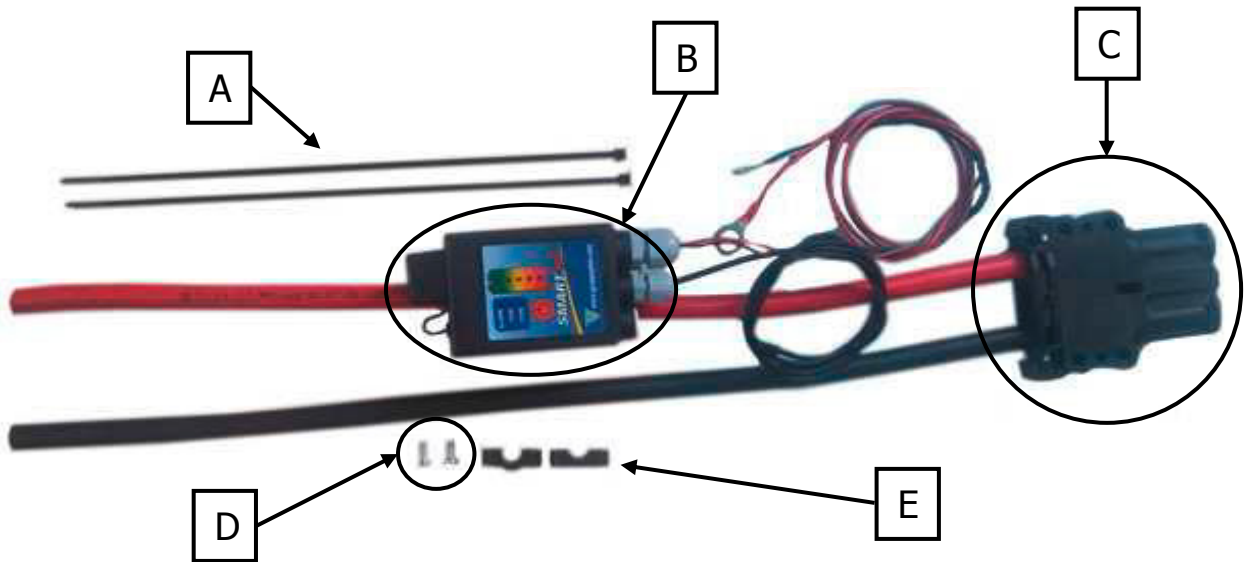
# SMART-UP DEVICE BASIC INSTRUCTIONS

1. [Mechanical installation \(hardware\)](#)
2. [Software installation](#)
  - [Driver installation](#)
3. [Programming procedure](#)
  - 3.1. [Programming TAB](#)
  - 3.2. [Associations](#)
4. [Data download](#)
  - [Possibility to download data on a USB stick](#)



# 1. Mechanical installation (hardware)

- Pass the cable of the positive pole (red cable) through the hole of the SmartUP module.



**A)** Plastic bands

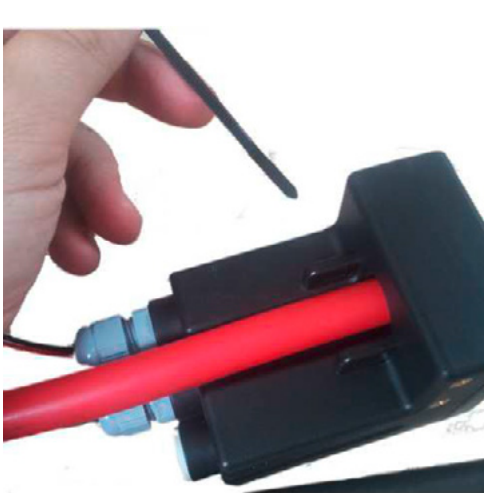
**B)** SmartUP module

**C)** DINxxx Connector

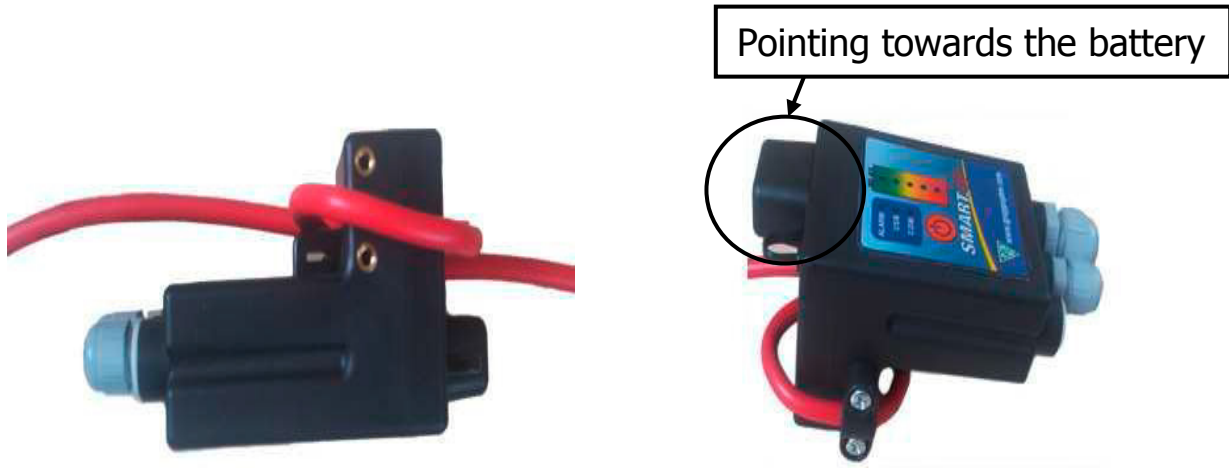
**D)** Screws

**E)** Cable locks

- Fix the cable of the positive pole (red cable) with the plastic bands.



- In case of nominal currents corresponding to less than (or equal to) 100 A, fix the cable of the positive pole (red cable) **twice** through the hole of the SmartUP module, then fix it with the fairlead at the side of the module.



Make sure you have plugged the cable in the right direction: current should flow from the charger to the battery through the SmartUP, so the LEDs on the device should switch on from the bottom to the top during charge.

In case of reverse connection tick on this button in the "Programming" TAB (see below: 3.1), which is the current's direction indicator.



## 2. Software installation

- Download the "Smart.View II" software from this [link](#).
- Connect the provided USB cable to a USB port on your computer.

- In order to install the package, run the "Setup.exe" program from the "/DISK1" folder and then follow the installation instructions.



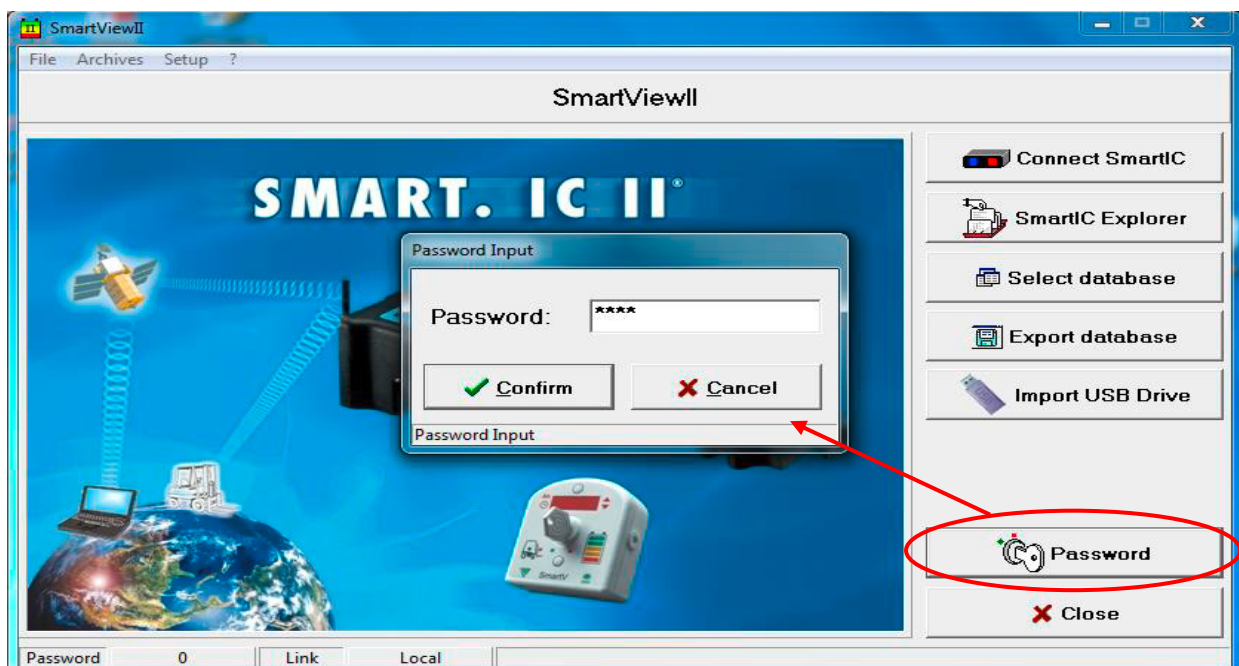
- Check the desktop to start the "Smart.View II" program.

## Driver installation

- To install the drivers, open the "Driver" folder and go to the "SmartUP Driver" subfolder.
- Launch the "Setup.exe" program in the 32 or 64 version depending on the type of configuration and follow the installation instructions.

## 3. Programming procedure

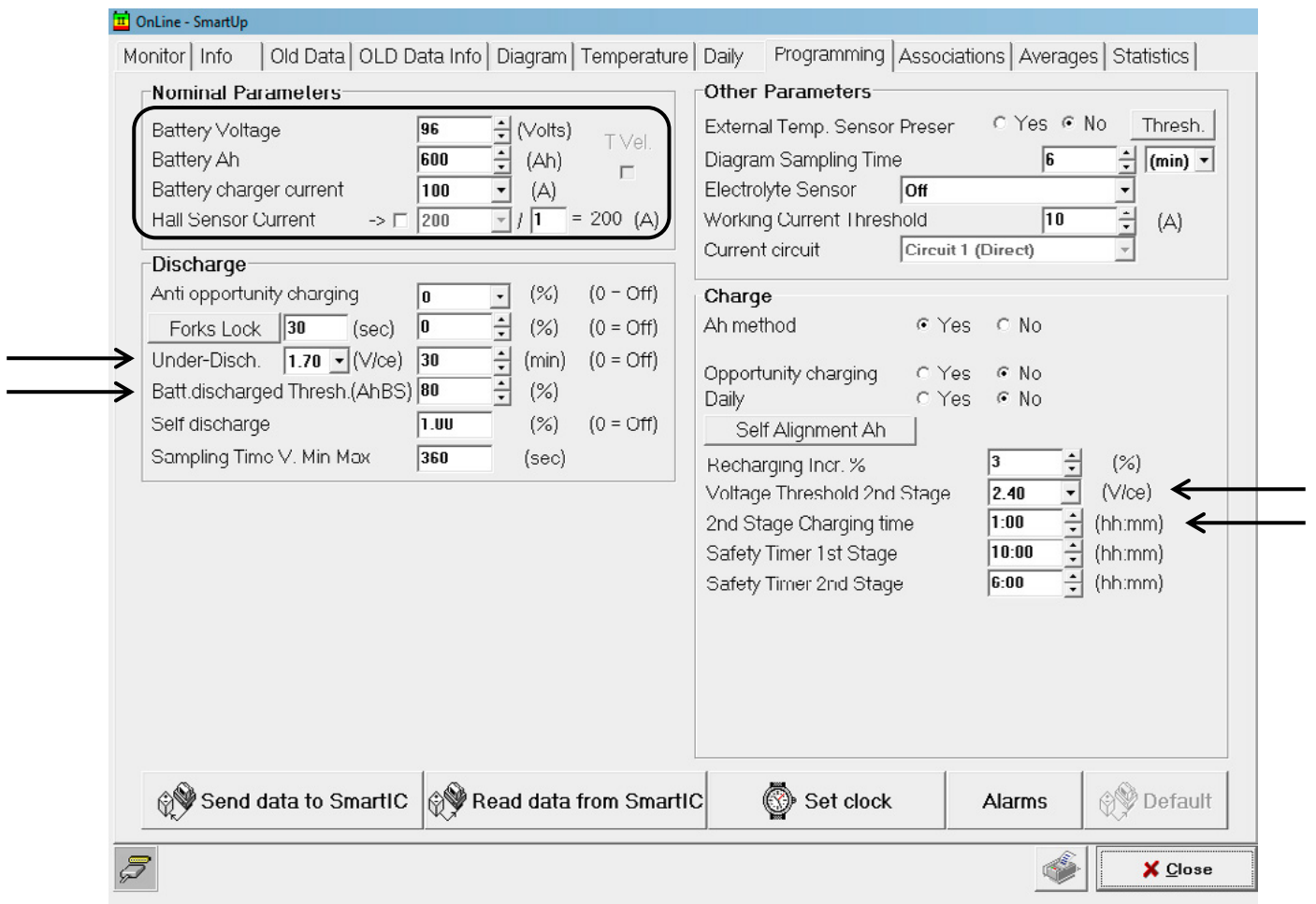
- If you are connecting for the first time you need to program/align the device: from the main menu select "Password" and insert the default password "alfa", then " ✓ Confirm".



- Now you can connect the Smart.IC device by pressing the button "Connect SmartIC" > "Connect ✓".

### 3.1. Programming TAB

This TAB (see figure below) in the "Programming" menu allows access to the parameters which determine how the SmartUP will operate and how data will be collected.



- First of all configure the "Nominal parameters" selecting Battery Voltage (Volts), Battery Ah (capacity), Battery Charger Current (A), then set the Hall Sensor Current (A) depending on how the device is connected: the

highlighted value in the figures below represents how many times the cable of the positive pole (red cable) passes through the Hall Sensor.



Hall Sensor Current ->  200  1 = 200 (A)



Hall Sensor Current ->  200  / 2 = 200 (A)

- Then go to the "Discharge" parameters: put the Under Discharge value appropriate to the battery type (i.e. 1.70 V/cell for Wet lead acid batteries or 1.80 V/cell for GEL/AGM batteries) and the Battery Discharged Threshold (AhBS) at appropriate discharging level (typically 80%).
- Finally, in the "Charge" parameters select the Voltage Threshold 2nd Stage value and insert the appropriate value (refer to Charging profile, typically 2.40 V/cell for Wet lead acid batteries), then set up the 2nd Stage Charging Time at least at 1 hour.

## 3.2. Associations

Associations are parameters which working cycles and diagrams collected by the Smart.IC devices during operation refer to. In order to distinguish the different data log sessions and acquisitions, also remember to change the values from the "Association Data" TAB and send them to the SmartUP.

OnLine - SmartUp

Monitor | Info | Old Data | OLD Data Info | Diagram | Temperature | Daily | Programming | Associations | Averages | Statistics

**Association Data**

Customer: C14NO002517

Retailer:

User:

Battery ID:

Forklift Truck ID:

SmartIC Serial Num.: C14NO002517

Send Data Reread Data

Clear Table

**PREVIOUS USES OF SMARTIC**

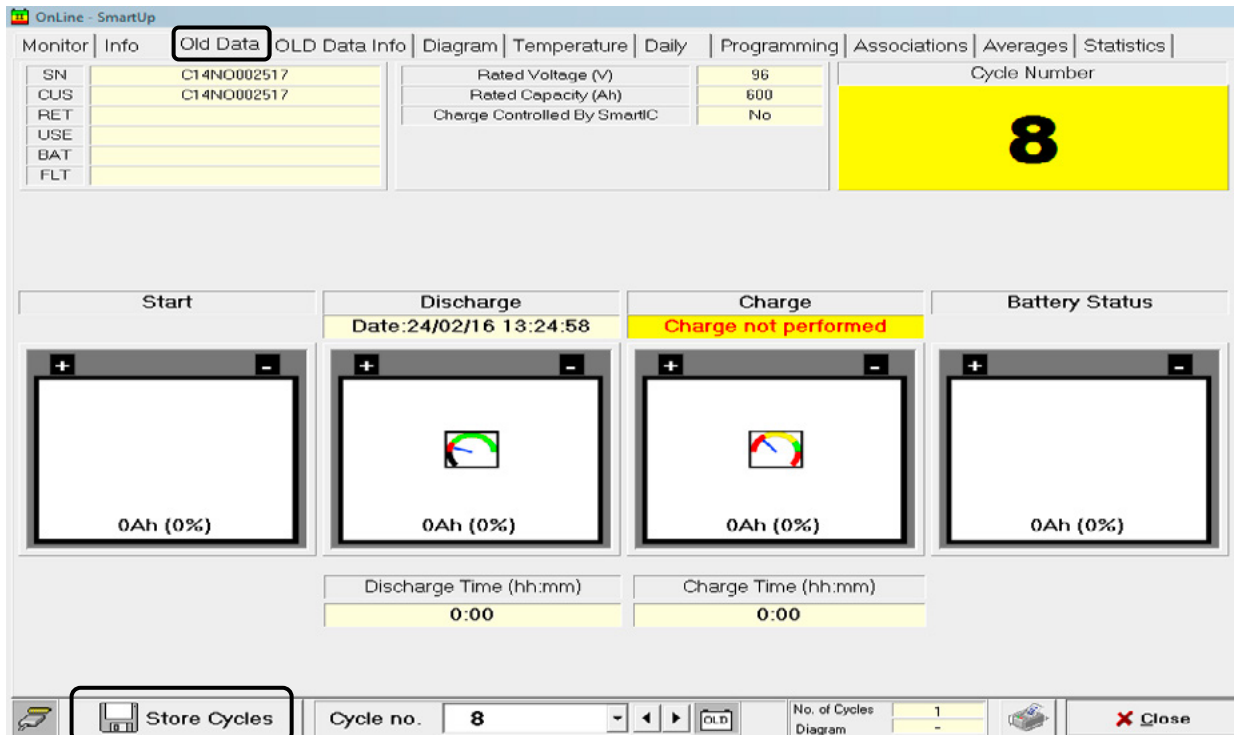
ID	Customer	Retailer	User	Battery ID	Forklift Truck ID	pntOld
0						
1	C14NO002517					
0						
0						
0						
0						
0						
0						
0						
0						
0						
0						
0						
0						

Close

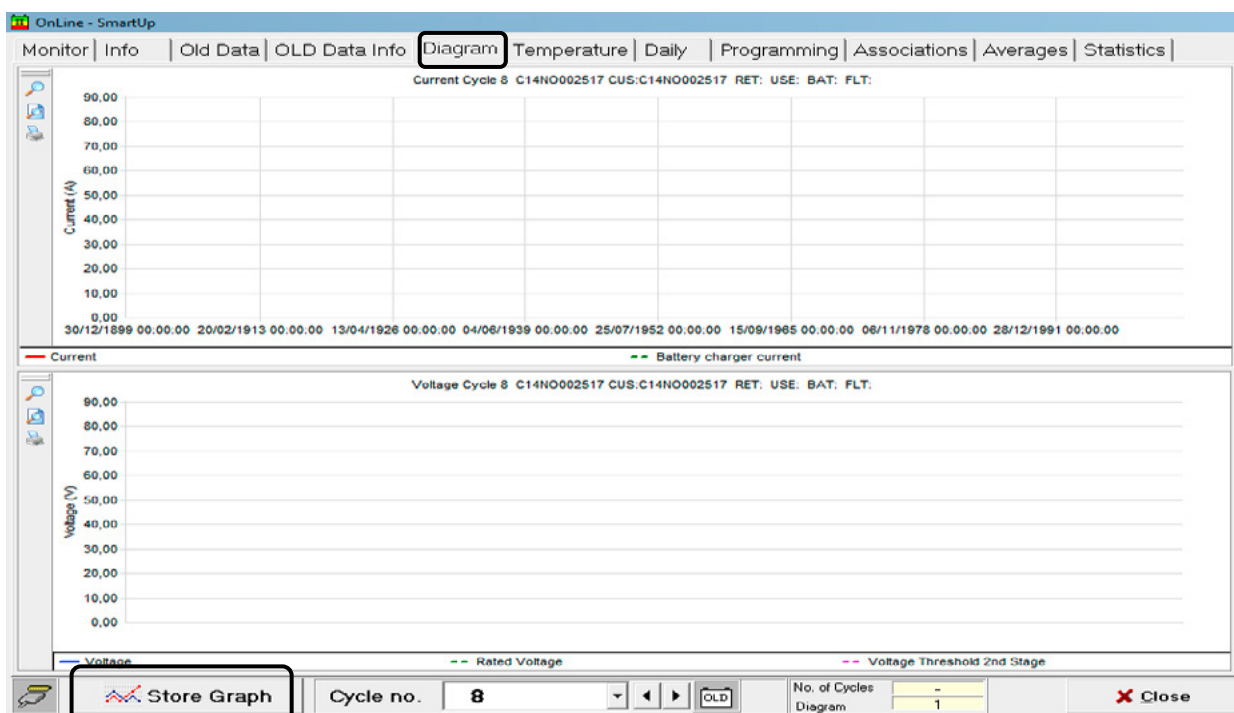
## 4. Data download

You have the possibility to download the data, both cycles and graphics.

- By pressing "Store Cycles" from the menu "Old Data", the data of all working cycles not yet downloaded – with the exception of the current cycle – are transferred to the local database.



- Press "Store Graph" from the menu "Diagram" to download data.





## Possibility to download data on a USB stick

- Insert the USB stick with the SmartUP connected to the batteries.
- Keep the red button pressed for about 10 seconds until the USB LED starts to flash.
- Wait for the data download and then disconnect the USB stick.
- In order to import data on the PC, connect the USB stick to it, open the "Smart.View II" program and use the function "Import USB Drive" from the main menu.

